


Shipbuilding equipment



Holmatro, established in the Netherlands in 1967, originally traded high-pressure hydraulic equipment for the shipbuilding industry. Today, we design, develop, manufacture and supply high-pressure hydraulic industrial equipment, rescue equipment and marine equipment for specialised industries worldwide.

Holmatro industrial products are innovative, of high quality and above all effective under diverse conditions. With offices in the Netherlands, the USA, China and Poland including an extensive dealer network, we are dedicated to producing high-performance solutions for specific markets and applications.

www.holmatro.com

Mastering power

Holmatro products are ultimately based on the ground rule that forces can only be applied usefully when controlled effectively. This is true for operating industrial equipment, which involves the deployment and control of forces for heavy industrial applications. With rescue equipment it is of vital importance to perform rescue operations in a controlled, precise and meticulous manner. And our marine equipment is used to master natural forces and put them to work in sailing. We have captured this vision in two words: 'mastering power'

Guaranteed quality

Our experience and in-house engineering knowledge enable us to provide you with expert advice on both products and applications. All of our products are designed, manufactured and serviced to the highest quality and reliability standards. Because they are expected to operate under extreme conditions, Holmatro industrial tools are extensively tested before they are allowed to prove themselves in practice. They are subjected to the strictest possible quality standards in areas such as durability, side loading, mechanical deformation and overpressure.

Supported by dealers

Our worldwide dealer network guarantees the same quality standards. Fully trained in our own training centre, Holmatro dealers are your warranty for optimum service and advice.



Shipbuilding **equipment**

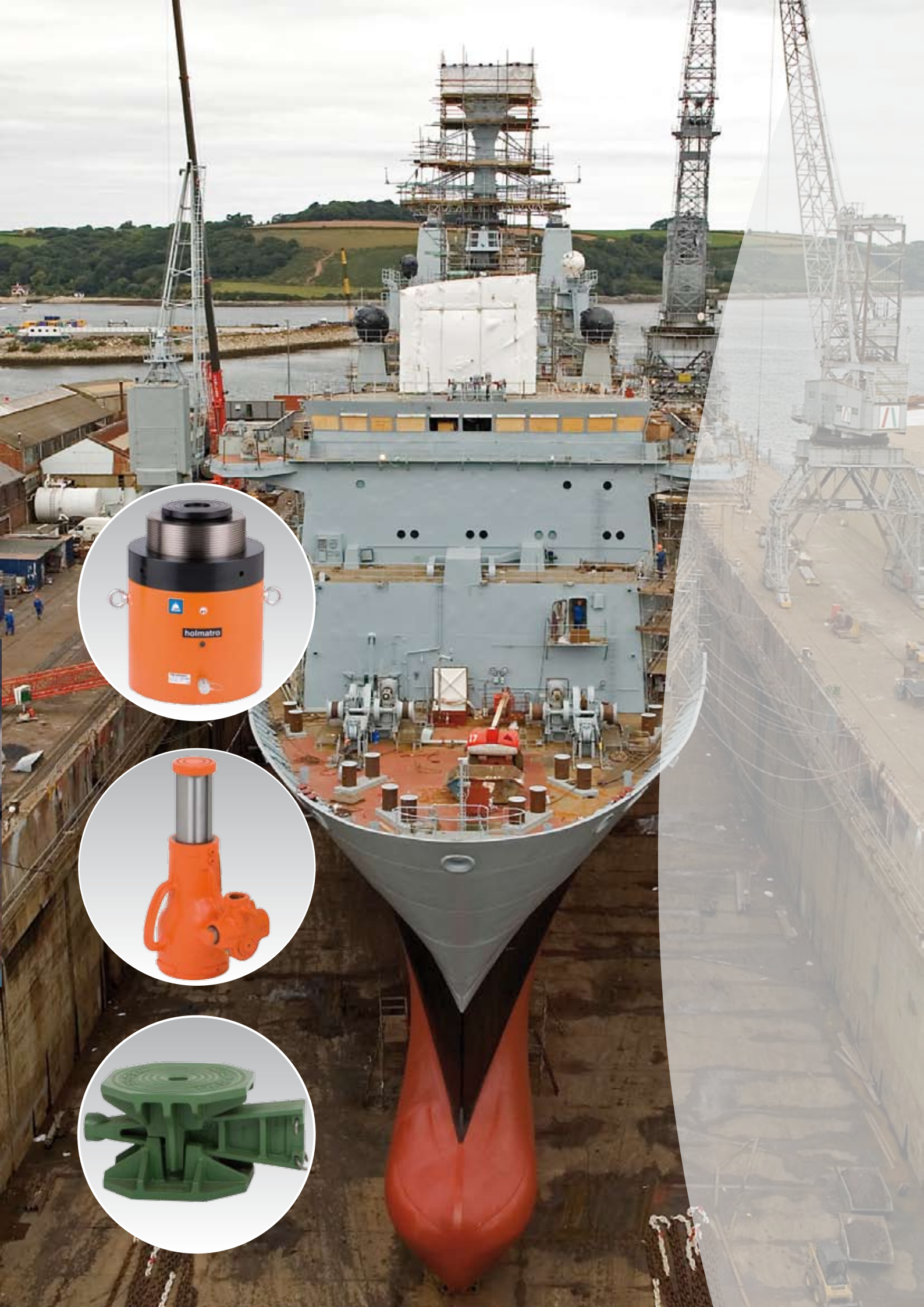
As of 1967 Holmatro Industrial Equipment has been supplying and manufacturing mechanical as well as high-pressure hydraulic equipment for the shipbuilding industry. From experience we have gained an understanding of the industry's high demands regarding equipment quality, strength and durability.

From the early construction stages to the actual ship launching we offer reliable solutions to control and shift heavy loads in a safe and easy manner. These solutions include wedges for ship stabilization, pulling cylinders to pull together ship sections, cylinder sets for propeller mounting and custom-made ship launching sets.

Next to shipbuilding equipment Holmatro offers a wide range of hydraulic lifting, pulling, bending and cutting solutions for various industrial applications. This brochure shows just a few of the possible uses of our high-pressure hydraulic, pneumatic and mechanical tools. In reality there are many more, and new applications are found every day.

Feel free to contact us or please visit our website for more information on our industrial equipment and systems.





Selection list hydraulic cylinders



capacity	closed height	stroke	oil content *	weight	return + remark	model	art no
tons	mm	mm	cm³	kg			
5	46	15	6.6	1.1	gravity	HFJ 5 G 1.5	100.111.001
	157	75	50	1.5	spring	HTJ 5 S 7.5	100.112.003
	202	120	80	1.7	spring	HTJ 5 S 12	100.112.004
10	49	41/20	118	4.5	gravity + telescopic	HFJ 10/30 G 4	100.111.005
	52	15	13.8	1.9	gravity	HFJ 10 G 1.5	100.111.011
	107	25	35	2.2	spring	HJ 10 S 2.5	100.112.007
	110	50	69	2.4	gravity	HJ 10 G 5	100.112.012
	135	50	69	2.6	spring	HTJ 10 S 5	100.112.020
	185	100	138	3.6	spring	HTJ 10 S 10	100.112.015
	202	60	83	3.5	spring	H CJ 10 S 6	100.112.062
	255	150	207	4.7	spring	HTJ 10 S 15 C	100.112.022
	270	150	210	5.9	gravity + lock nut	HJ 10 G 15 SN	100.082.003
	292	150	207	5.1	spring	H CJ 10 S 15	100.112.063
	305	200	276	5.7	spring	HTJ 10 S 20	100.112.097
	338	150	207/102	6.1	hydraulic	H CJ 10 H 15	100.122.066
	398	250	345	7.2	spring	H CJ 10 S 25	100.112.064
20	54	15	28.3	3.0	gravity	HFJ 20 G 1.5	100.111.031
	102	50	141	3.8	gravity	HJ 20 G 5	100.112.032
	140	111/55	554	12.5	gravity + telescopic	HJ 20/50 G 11	100.112.103
	164	50	142	3.1	spring	HAC 20 S 5	100.112.150
	214	100	283	3.9	spring	HAC 20 S 10	100.112.149
	264	150	424	4.6	spring	HAC 20 S 15	100.112.137
25	116	25	83	4.4	spring	HJ 25 S 2.5	100.112.008
	137	50	166	5.2	spring	HTJ 25 S 5	100.112.098
	187	100	332	6.8	spring	HTJ 25 S 10	100.112.042
	237	150	498	8.5	spring	HTJ 25 S 15 C	100.112.026
	283	150	498	14.0	gravity + lock nut	HJ 25 G 15 SN	100.082.002
	323	150	498	10.5	spring	H CJ 25 S 15	100.112.065
	335	150	498/260	12.7	hydraulic	H CJ 25 H 15	100.122.067
	360	250	830	12.7	spring	HTJ 25 S 25	100.112.027
	460	350	1162	17.5	spring	HTJ 25 S 35	100.112.028
30	475	250	829/432	18.2	hydraulic	H CJ 25 H 25	100.122.068
	33	5	22	3.4	gravity	HFJ 30 G 0.5	100.111.051
	48	15	66	4.7	gravity	HFJ 30 G 1.5	100.111.052
	120	60	265	6.0	gravity	HJ 30 G 6	100.112.054
	182	50	209	4.8	spring	HAC 30 S 5	100.112.156
	232	100	418	6.0	spring	HAC 30 S 10	100.112.155
50	282	100	629	7.0	spring	HAC 30 S 15	100.112.143
	45	5	34	7.2	gravity	HFJ 50 G 0.5	100.111.071
	134	25	177	12.3	spring	HJ 50 S 2.5	100.112.009
	142	60	425	12.5	gravity	HJ 50 G 6	100.112.073
	150	61	432	7.0	air + aluminium	HLJ 50 A 6	100.112.060
	152	50	354	14.0	spring	HJ 50 S 5	100.112.072
	183	50	355	8.1	spring	HAC 50 S 5	100.112.154
	196	104	737	9.0	air + aluminium	HLJ 50 A 10	100.112.059
	206	100	709	17.4	spring	HJ 50 S 10	100.112.077
	233	100	709	9.9	spring	HAC 50 S 10	100.112.153
	257	150	1064	22.0	spring	HJ 50 S 15	100.112.074
	282	150	1064	27.0	gravity	HJ 50 G 15	100.112.035
	282	150	1064/309	27.0	hydraulic	HJ 50 H 15	100.122.002

Flat cylinder
HFJ 10 G 1.5



Cylinder with mounting thread
HCJ 10 H 15



Cylinder with safety lock nut
HJ 10 G 15 SN



Aluminium cylinder
HLJ 50 A 10



Selection list hydraulic cylinders

capacity	closed height	stroke	oil content *	weight	return + remark	model	art no
tons	mm	mm	cm ³	kg			
50	283	150	1063	11.6	spring	HAC 50 S 15	100.112.144
	307	150	1065	24.0	gravity + lock nut	HJ 50 G 15 SN	100.082.001
	363	250	1773	30.0	spring	HJ 50 S 25	100.112.076
	463	300	2127	39.5	gravity	HJ 50 G 30	100.112.036
	463	300	2127/620	44.0	hydraulic	HJ 50 H 30	100.122.022
75	347	150	1559	48.0	gravity	HJ 75 G 15	100.112.037
	347	150	1559/755	48.0	hydraulic	HJ 75 H 15	100.122.003
	397	300	3117	66.0	gravity	HJ 75 G 30	100.112.038
	397	300	3117/1509	66.0	hydraulic	HJ 75 H 30	100.122.004
100	64	5	72	15.5	gravity	HFJ 100 G 0.5	100.111.091
	74	15	215	18.0	gravity	HFJ 100 G 1.5	100.111.092
	158	60	860	18.5	gravity	HJ 100 G 6	100.112.093
	162	50	715	29.0	spring	HJ 100 S 5	100.112.094
	170	50	715/283	63.0	hydraulic	HJ 100 H 5	100.122.009
	226	100	1430	40.0	spring	HJ 100 S 10	100.112.096
	228	50	716	19.7	spring	HAC 100 S 5	100.112.152
	278	100	1432	23.3	spring	HAC 100 S 10	100.112.151
	309	150	2145	55.8	gravity	HJ 100 G 15	100.112.039
	309	150	2145/848	58.0	hydraulic	HJ 100 H 15	100.122.052
	312	150	2145	55.0	spring	HJ 100 S 15	100.112.095
	323	150	2150	71.0	gravity + lock nut	HJ 100 G 15 SN	100.082.000
	328	150	2147	26.9	spring	HAC 100 S 15	100.112.142
	497	300	4290	88.6	gravity	HJ 100 G 30	100.112.040
	497	300	4290/1695	92.0	hydraulic	HJ 100 H 30	100.122.054
150	80	15	321	28.0	gravity	HFJ 150 G 1.5	100.111.111
	317	150	3207	74.6	gravity	HJ 150 G 15	100.112.046
	317	150	3207/1650	76.0	hydraulic	HJ 150 H 15	100.122.061
	502	300	6414	125.3	gravity	HJ 150 G 30	100.112.047
	502	300	6414/3300	128.0	hydraulic	HJ 150 H 15	100.122.062
	363	150	3207	101.0	gravity + lock nut	HJ 150 G 15 SN	100.112.136
200	327	150	4253	120.0	gravity	HJ 200 G 15	100.112.048
	327	150	4253/1238	121.0	hydraulic	HJ 200 H 15	100.122.071
	507	300	8505	184.0	gravity	HJ 200 G 30	100.112.049
	507	300	8505/2475	186.0	hydraulic	HJ 200 H 30	100.122.072
250	385	150	5195	180.0	gravity + lock nut	HJ 250 G 15 SN	100.112.083
300	377	150	6225	238.0	gravity	HJ 300 G 15	100.112.050
	377	150	6225/1965	240.0	hydraulic	HJ 300 H 15	100.122.081
	542	300	12450	257.0	gravity	HJ 300 G 30	100.112.099
	542	300	12450/3930	360.0	hydraulic	HJ 300 H 30	100.122.082
400	402	150	7950	322.0	gravity	HJ 400 G 15	100.112.100
	402	150	7950/3238	325.0	hydraulic	HJ 400 H 15	100.122.091
	552	300	15900	408.0	gravity	HJ 400 G 30	100.112.056
	552	300	15900/6476	413.0	hydraulic	HJ 400 H 30	100.122.092
500	442	150	10605	386.0	gravity	HJ 500 G 15	100.112.139
	442	150	10605/5400	390.0	hydraulic	HJ 500 H 15	100.122.043
	587	300	21210	511.0	gravity	HJ 500 G 30	100.112.138
	587	300	21210/10800	520.0	hydraulic	HJ 500 H 30	100.122.038

* Closed heights listed above are based on cylinders with standard saddles. Tilting saddles available upon request.

* = press / retract

Flat cylinder
HFJ 100 G 0.5



Double acting cylinder
HJ 300 H 15



Standard cylinder
HJ 100 G 6



Aluminium cylinder
HAC 50 S 10



Selection list hollow plunger cylinders



capacity	ø hole in plunger	closed height	stroke	oil content *	weight	return	model	art no
tons	mm	mm	mm	cm³	kg			
5	17	87	25	19	1.9	spring	HHJ 5 S 2.5	100.111.002
12	21	156	50	88	7.8	spring	HHJ 12 S 5	100.111.021
	21	298	150	264	11.0	spring	HHJ 12 S 15	100.111.029
17	27	214	50	118	7.3	spring	HHJ 17 S 5	100.112.023
20	27	182	50	156	8.6	spring	HHJ 20 S 5	100.112.033
	27	389	150	467	18.0	spring	HHJ 20 S 15	100.112.030
30	33	120	50	204	10.0	gravity	HHJ 30 G 5	100.111.053
	33	226	75	306	15.0	spring	HHJ 30 S 7.5	100.112.055
	33	362	150	612	25.0	spring	HHJ 30 S 15	100.112.034
	33	287	150	613 / 274	23.0	hydraulic	HHJ 30 H 15	100.122.045
45	39	388	150	945	35.5	spring	HHJ 45 S 15	100.112.061
60	45	272	75	636	34.5	spring	HHJ 60 S 7.5	100.112.081
	45	334	200	1696/1256	40.0	hydraulic	HHJ 60 H 20	100.122.031
100	54	265	100	1415/982	53.0	hydraulic	HHJ 100 H 10	100.122.051
	54	395	200	2830/1964	78.0	hydraulic	HHJ 100 H 20	100.122.053
110	80**	315	75	1155	78.5	spring	HHJ 110 S 7.5	100.112.101

* = press / retract

** = 54 optional

HHJ 30 S 15



HHJ 11 S 15



Pulling cylinders



model		HPJ 11 S 15	HPJ 30 S 15	HPJ 60 S 15	HPJ 100 H 15
art no		100.131.001	100.131.011	100.131.021	100.131.031
working pressure	bar / Mpa	720 / 72	720 / 72	720 / 72	720 / 72
tonnage*	tons	11 / -	30 / -	60 / -	100 / 130
stroke length	mm	150	150	150	150
return		spring	spring	spring	hydraulic
capacity pull	kN/t	113 / 11.5	298.7 / 30.5	610.4 / 62.2	953.7 / 97.3
capacity push	kN/t	- / -	- / -	- / -	1271.9 / 129.7
oil content	cm³	236 / -	623 / -	1272 / -	1988 / 2651
effective pressure area	cm²	15.7 / -	41.5 / -	84.8 / -	132.5 / 176.7
weight	kg	11.5	26	45	75
maintenance set	art no	100.133.001	100.133.051	100.133.101	100.133.151
recommended pump	model	HTW 300 B	HTW 1800 B	EHW 1650 RC	HTW 1800 B
pressure gauge	model	A 510	A 510	A 510	A 510

* = pull / push

HPJ 30 S 15 - clevis eyes and protection spring



HPJ 11 S 15 - pulling eyes and protection spring



Hand pumps - two-stage - single-acting



model		HTS 550 A	HTW 300 B	HTW 700 A	HTW 2200 A
art no		100.541.022	100.441.003	100.441.013	100.542.003
working pressure	bar/Mpa	720 / 72	720 / 72	720 / 72	720 / 72
operating force max.	kg	50	36.5	52	40
output 1st stage	cm³/stroke	3	5	11	13
output 2nd stage	cm³/stroke	-	1	2	2.5
max. pressure 1st stage	bar	720	30	30	30
effective oil content	cm³	550	300	700	2200
weight incl. oil	kg	6	4	8	13.3
maintenance set	art no	150.113.251	100.443.006	100.443.494	100.543.100

HTS 550 A



HTW 700 A



Hand or foot pumps - two-stage - single- or double-acting



model		H/FTW 1800 B	H/FTW 2800 B	H/FTW 5800 B	H/FTW 8800 B
art no		100.141.005/008	100.141.002/009	100.141.004/010	100.141.006/007
working pressure	bar/Mpa	720 / 72	720 / 72	720 / 72	720 / 72
operating force max.	kg	36	36	36	36
output 1st stage	cm³/stroke	28	28	28	28
output 2nd stage	cm³/stroke	2.3	2.3	2.3	2.3
max. pressure 1st stage	bar	45	45	45	45
effective oil content	cm³	1800	2800	5800	8800
weight incl. oil	kg	9.3	11.5	15	22.5
maintenance set	art no	150.113.254	150.113.254	150.113.254	150.113.254

HTW 1800 B



HTW 8800 B



Accessories hand pumps



model	art no	description
M 321	100.181.321	double-acting control valve: H/FTW 1800 - 2800 - 5800 - 8800 pumps can be made suitable for double-acting tools or cylinders by mounting this valve
A 500	100.582.500	universal pressure gauge 0 - 720 bar, housing Ø 100 mm; connection: 1/2" NPT male thread
-	350.581.160	rubber protection cover, suitable for Ø 100 mm pressure gauges
A 108	100.181.108	pressure gauge adaptor with 1 x 3/8" NPT female thread, 1 x 3/8" NPT male thread and 1/2" NPT female thread for pressure gauge
H 2 SOU	100.572.102	2 m hose with male coupler on one side; other hose lengths available
SMV 2	100.182.322	single-acting manifold for accurate control of the oil flow; manifolds for use with more cylinders or double-acting systems are available
M 306	100.182.306	pressure gauge adaptor: indicates the pressure of port A or B, depending on the assembly, only in combination with M321
M 307	100.181.307	pressure gauge adaptor: indicates the pressure of port A or B depending on which is the highest, only in combination with M321
-		foot plate for pumps HTW 1800 - 2800 - 5800 - 8800 can be ordered separately

Compact electric-powered pump



model		EHW 1650 RC
art no		100.551.001
working pressure	bar / Mpa	720 / 72
output 1st stage	l / min	2
output 2nd stage	l / min	0.25
effective oil content	l	1.65
motor		0.35 kW - 230 V - 50/60 Hz
max. power motor	W	350
charge remote control	V	15
weight	kg	11.6
maintenance set	art no	100.553.116

Options:

1. needle valve for controlled return of oil
2. pressure gauge
3. needle valve + pressure gauge

Features / Benefits



- usable at any place because of compact construction
- lightweight
- for both horizontal and vertical use
- perfectly suitable for cable cutters and nut crackers
- suitable for single-acting tools and cylinders
- connection: 3/8" NPT, female
- standard with waterproof (IP 54) remote control

EHW 1650 RC



Compact air-powered pumps



model		AHS 1400 FS	AHS 1400 D
art no		100.602.001	100.602.002
working pressure	bar/Mpa	0 - 720	0 - 720
suitable for		single-acting	double-acting
air pressure	bar	0 - 8.5	0 - 8.5
pump output - unloaded	l / min	0.96	0.96
pump output - loaded	l / min	0.41	0.41
air consumption - unloaded	l / min	700	700
air consumption - loaded	l / min	580	580
effective oil content	l	1.4	1.4
weight incl. oil	kg	6.5	9.6
maintenance set	art no	100.603.001	100.603.001

Features / Benefits



- usable at any place because of compact construction
- lightweight
- safe:
 - when the air pressure is lost, the oil pressure is maintained (AHS 1400 FS)
- spark-free:
 - suitable for explosive rooms
- low-noise because of built-in silencer
- energy-saving:
 - stops as soon as the maximum pressure has been reached

AHS 1400 FS



Vari pumps

Vari pump



Vari pump



For more information on available vari pump models or for assistance in selecting a specific model, please contact your local Holmatro dealer

Numerous models to suit every need



- for single- or double acting hydraulic tools
- petrol-powered, air-powered (8 bar), electric-powered (230V-50Hz-1ph or 400V-50Hz-3ph)
- single-stage, two-stage
- for connection of 1 tool, 2 tools or more tools
- output levels from 0.6 to 5 litres per minute
- oil contents from 6 to 50 litres

Features / Benefits



- high operating speed
- safe:
 - oil pressure is maintained if power source fails
 - pressure-controlled non-return valve protects against pressure drop
- many accessories available: valves, gauges, carrying and protection frames, connecting blocks etc.

Propellor set cylinders

model		HY 100 G 1 U	HY 100 G 3.5 U
art no		120.012.001	120.012.011
effective pressure area	cm ²	50.27	50.27
oil content	cm ³	51	176
weight	kg	6.0	8.1
stroke	mm	10	35

Selection max. number of cylinders for propellor shaft diameter

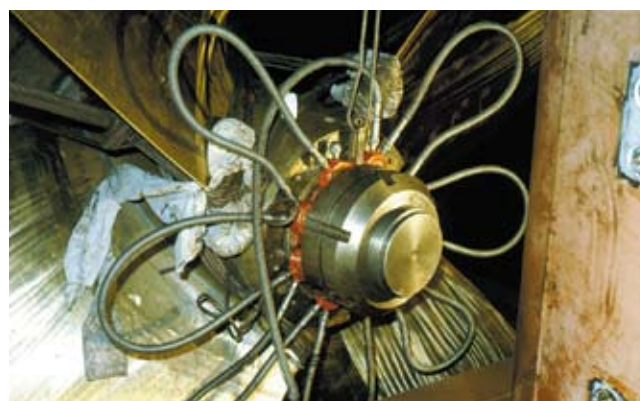
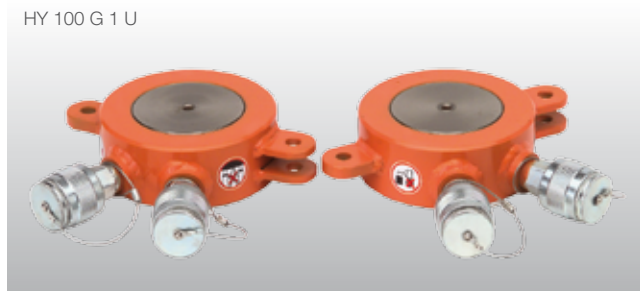
propellor shaft dia.		number of cylinders* (maximum)	max. available capacity	
mm	inch		tons	kN
200	8	7	700	6867
250	10	8	800	7848
300	12	9	900	8829
350	14	10	1000	9810
400	16	11	1100	10791
450	18	12	1200	11772
500	20	13	1300	12753
550	22	14	1400	13734
600	24	15	1500	14715
650	16	15	1500	14715
700	28	16	1600	15696
750	30	17	1700	16677
800	32	18	1800	17658
850	34	19	1900	18639
900	36	20	2000	19620
950	38	21	2100	20601
1000	40	22	2200	21582

* one or more link plates model Y200 may be required to match the number of cylinders with the propeller shaft diameter

Features / Benefits

- 100 tons per cylinder
- closed height from 49 mm
- stroke length 10 - 35 mm
- working pressure 2000 bars (200 Mpa)
- compact, lightweight
- fit any desired shaft diameter
- cylinders are equipped with 2 female couplers model Y 218

HY 100 G 1 U



Pump 2000 bar - two stage - single-acting

model		HTWY 2300
art no		120.442.001
output 1st stage	cm ³	31
output 2nd stage	cm ³	1.6
max. pressure 1st stage	bars	30
max. working pressure	bars	2000
tank content	cm ³	2300
weight incl. oil	kg	16
maintenance set	art no	120.443.001

HTWY 2300



Hydraulic hoses 2000 bar

		hose with 2 male couplers, model Y 219			hose with M14 x x1.5 (2x)		
colour		blue			blue		
safety ratio		2 1/2 : 1			2 1/2 : 1		
model		Y 1.5 MKU	Y 3 MKU	Y 5 MKU	Y 1.5 MK	Y 3 MK	Y 5 MK
art no		120.572.115	120.572.130	120.572.150	120.571.115	120.571.130	120.571.150
length	m	1.5	3.0	5.0	1.5	3.0	5.0

Mechanical jacks


model		JJ 1015	JJ 1513	JJ 2513	JJ 3513	JJ 5013	JJ 10011
art no		200.401.001	200.401.011	200.401.021	200.401.031	200.401.041	200.401.051
tonnage	t	10	15	25	35	50	100
closed height	mm	280	255	255	280	290	310
stroke length	mm	150	125	125	130	130	105
base Ø	mm	108	113	127	147	166	235
capacity	kN/t	98.1 / 10	147.2 / 15	245.3 / 25	343.4 / 35	490.5 / 50	981.0 / 100
handle bar (Ø x length)	mm	25 x 600	25 x 710	25 x 900	30 x 1000	30 x 1200	30 x 1500
weight	kg	12	12	16	24	31	72
maintenance set	art no	200.403.001	200.403.001	200.403.201	200.103.301	200.403.301	200.403.501

JJ 1513



JJ 2513

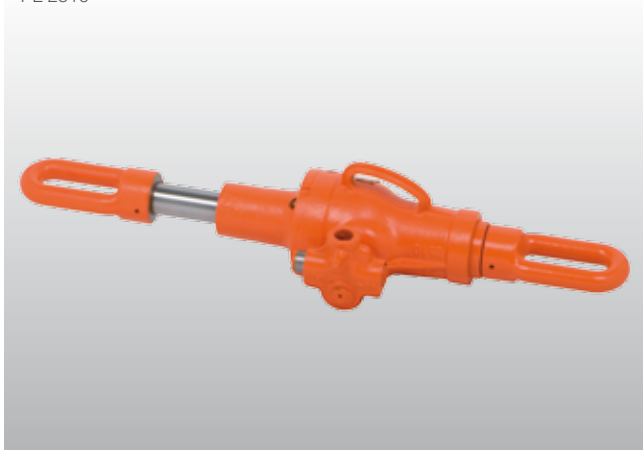

Features / Benefits


- safe:
 - self-locking
- usable in all positions
- robust:
 - resistant to continuous heavy operating conditions
- can be used close to welding works
- can be used under water
- low maintenance

Mechanical pulling jack


model		PL 2510
art no		200.421.001
tonnage	t	25
length, retracted plunger	mm	775
stroke length	mm	100
capacity	kN/t	245.3 / 25
handle bar (Ø x length)	mm	25 x 700
weight	kg	32
maintenance set	art no	200.403.201

PL 2510


Features / Benefits


- safe:
 - self-locking
- usable in all positions
- robust:
 - resistant to sustained heavy operating conditions
- for use in places where welding takes place
- suitable for use under water
- low maintenance



Ship wedges

model		W 50	W 80
art no		500.501.050	500.501.080
static load capacity	ton / kN	50 / 490.5	80 / 784.8
max. height	mm	225	340
min. height	mm	185	270
dimensions	mm	245 x 260	315 x 345
weight	kg	28	58

W 50



Features / Benefits

- unloads in one go with maximum load
- robust:
 - resistant to heavy duty working conditions of long duration
- can be used close to welding works
- low maintenance



Ship launching sets

Holmatro offers custom-made hydraulic cylinder sets to launch ships sideways in an extremely controlled manner. One set consists of a cylinder equipped with an electric dump valve, a hand pump with a pressure gauge and a 5-metre hose, and a 5-litre tank with a large connecting hose. Depending on the circumstances and the dimensions of the ship, 4, 6 or 8 of these launching sets are required.

The procedure: Before launching the ship all support materials such as ship wedges are knocked away. The ship now only rests on a number of slides, supported by blocks which are held back by the cylinder sets. The cylinders are installed with the plungers pressed outward. This is done with the help of the hand pumps. Each cylinder is connected to a tank by means of a large diameter hose. The system remains under pressure by keeping the electric dump valves on the cylinder in closed position. The actual launching is started by opening the dump valves simultaneously from a safe distance, after which the oil flows from the cylinders into the tanks. This instant, yet carefully controlled pressure release makes the ship slide down evenly, while the cylinder plungers retract through the ship's weight. In a matter of seconds the cylinders topple over and the ship lands in the water safely.

Features / Benefits

- working pressure 720 bar (72 Mpa)
- capacity according to customer specification
- stroke length according to customer specification
- other pump types available besides hand pump
- electric valve supplied with each cylinder

Ship launching set



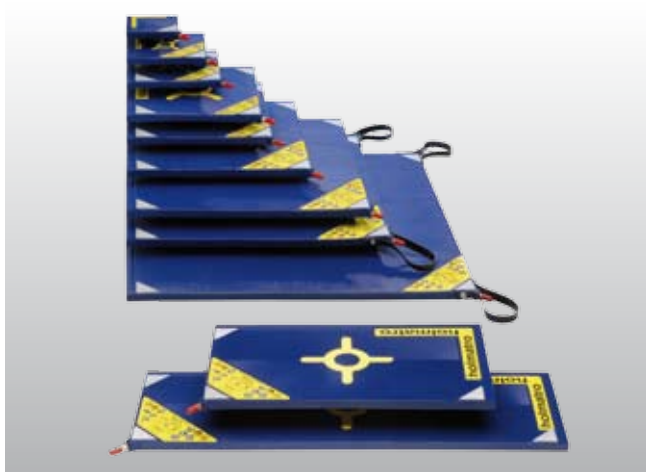
Lifting bags - models 1 up to 18

model	HLB 1	HLB 3	HLB 5	HLB 10	HLB 12	HLB 18
art no	350.321.003	350.321.004	350.321.006	350.321.007	350.321.008	350.321.009
working pressure bar	8	8	8	8	8	8
max. effective lifting force tons / kN	1 / 10	3.7 / 35	5.1 / 50	10.2 / 100	12.2 / 120	18.3 / 180
max. inflation height mm	80	130	150	215	225	240
dimensions (l x b) mm	150 x 150	228 x 228	270 x 270	380 x 380	408 x 408	660 x 360
weight kg	0.6	1.5	2	3.8	5	6.8
thickness incl. profile mm	22	22	22	25	25	25
air content (8 bar) l	6.3	16.2	22.5	76.5	90	171
water content (8 bar) l	0.7	1.8	2.5	8.5	10	19

Lifting bags - models 20 up to 67

model	HLB 20	HLB 24	HLB 29	HLB 32	HLB 40*	HLB 67*
art no	350.321.010	350.321.012	350.321.017	350.321.013	350.321.014	350.321.015
working pressure bar / Mpa	8	8	8	8	8	8
max. effective lifting force tons / kN	20.3 / 200	24.4 / 240	30.6 / 300	32.8 / 320	40.7 / 400	68 / 670
max. inflation height mm	290	215	348	380	405	520
dimensions (l x b) mm	508 x 508	310 x 1000	611 x 611	658 x 658	714 x 714	908 x 908
weight kg	6.7	9.5	9.8	13	15.1	23.5
thickness incl. profile mm	25	25	25	25	25	25
air content (8 bar) l	189	216	373.5	450	558	1206
water content (8 bar) l	21	24	41.5	50	62	134

* supplied with carrying straps

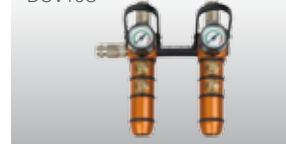

Features / Benefits

- small overall dimensions:
 - compact when empty
 - unique lowered insertion edges
- made of aramid reinforced rubber:
 - highly flexible
 - adaptable to various types of surfaces
 - maximum grip on all surfaces
 - proven durability
 - very low maintenance
- high lifting force
- even distribution of pressured power
- suitable for many applications:
 - interchangeable with conventional mechanical systems
 - easy to position under all conditions
 - inflatable with air, water and oil

Accessories lifting bags

model	art no	description	model	art no	description
AH 5 YU	350.572.006	hose yellow, 5m	AH 10 YU	350.572.009	hose yellow, 10m
AH 5 BU	350.572.007	hose blue, 5m	AH 10 BU	350.572.011	hose blue, 10m
AH 5 RU	350.572.008	hose red, 5m	AH 10 RU	350.572.012	hose red, 10m
SCV 10 U	350.582.042	control unit (single), safety valve set at 8.5 bar			
DCV 10 U	350.582.034	control unit (double), safety valves set at 8.5 bar			
TCV 10 U	350.582.059	control unit (triple), safety valves set at 8.5 bar			
QCV 10 U	350.582.060	control unit (quadruple), safety valves set at 8.5 bar			
HDC 10 AU	350.182.003	synthetic control box (bar), safety valves set at 8.5 bar			
HDC 10 AJU	350.182.004	synthetic control box (Mpa), safety valves set at 8.5 bar			
-	350.582.035	shut-off hose with safety valve set at 8.5 bar			
UAS 10	350.582.050	air adapter set for connection on various air sources; delivered in synthetic carrying/storage box			

DCV10U



shut-off hose



hoses





Also available in the product range of Holmatro Industrial Equipment:



INDUSTRIAL CUTTERS



STEP CYLINDERS



NUT CRACKERS



STUD TENSION CYLINDERS



FLANGE SPREADERS

Holmatro Industrial Equipment B.V.

P.O. Box 66
4940 AA Raamsdonksveer
The Netherlands
T +31 (0)162 - 75 15 00
F +31 (0)162 - 58 24 82
E industry@holmatro.com

Holmatro Inc.

505 Mc Cormick Drive
Glen burnie, MD 21061
U.S.A.
T +1 - 800 - 654 - 0203
F +1 - 410 - 768 - 4878
E industrial@holmatro-usa.com

Holmatro Polska Sp. z o.o.

www.holmatro.com

©Holmatro® 03 0211 980.000.139

Disclaimer

While the greatest care has been devoted to the content, it is possible that the information in this printed matter is incorrect or incomplete. Holmatro N.V. and its affiliated companies (hereafter: Holmatro) cannot be held liable in any way for the consequences of activities undertaken based on this printed matter. If you have any doubts about the correctness or completeness of the information, you shall contact Holmatro (phone number: +31 (0)162-751500). Nothing from this printed matter can be copied and/or made public in any way without the explicit authorisation of Holmatro.