

MAIN CHARACTERISTICS

The BMC Container Multihole Lifting Beam designed both for lifting ISO-668 type maritime Containers and for the industry in general for the additional solution to lift any other longitudinal load. There are 3 models with **different capacities: 15, 24 and 34 tons** respectively, all with a maximum useful length of 2.5 meters.

DESCRIPTION

The Multihole lifting Beam for containers has been designed to facilitate the lifting of ISO-668 type maritime containers of all sizes by their lower hooks, and at the same time it can be used as a conventional Multihole beam. Therefore, it is a versatile solution for lifting loads by crane as it has multiple lifting configurations:

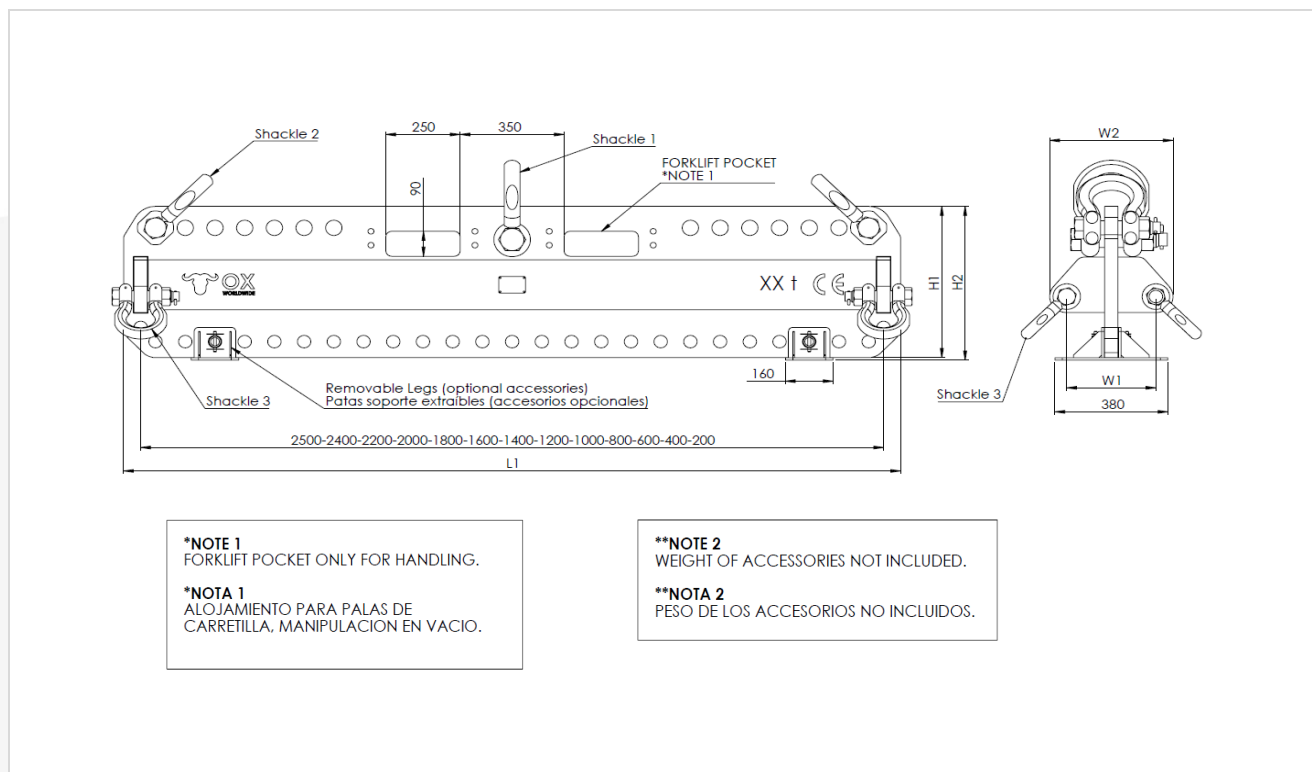
- In the upper part: It can be used by means of a central hitch by one point for situations with reduced heights or by means of a two-branch grab if there is sufficient height and thus have greater stability. It can even be used to add two cranes to enable the hoisting of loads that exceed the unit capacity of the cranes individually.
- In the lower part: It has a pattern of continuous holes that allows the position of the center of the load to be adjusted with reasonable precision. Additionally, as it is a design oriented to the lifting of maritime containers, it has transverse and slightly higher lugs located at the width of the container, to allow the hooking and lifting of these through the use of four chain-cables with a hook specific for lower side of container (twistlock) to raise the container by the base.

ADVANTAGES

- Versatility, both for lifting ISO-type shipping containers and for industry in general due to the additional solution for lifting any other longitudinal load intended for transport on a conventional truck bed and that can be lifted with oblique hauls or with two units.
- Allows the center of the load to be adjusted both longitudinally and transversally by means of the accessories supplied together according to each need.
- It incorporates a Forklift Pocket system only for handling.
- Optionally has accessory support legs.
- Units available in stock except for sale with immediate delivery.



MODELS & DIMENSIONS



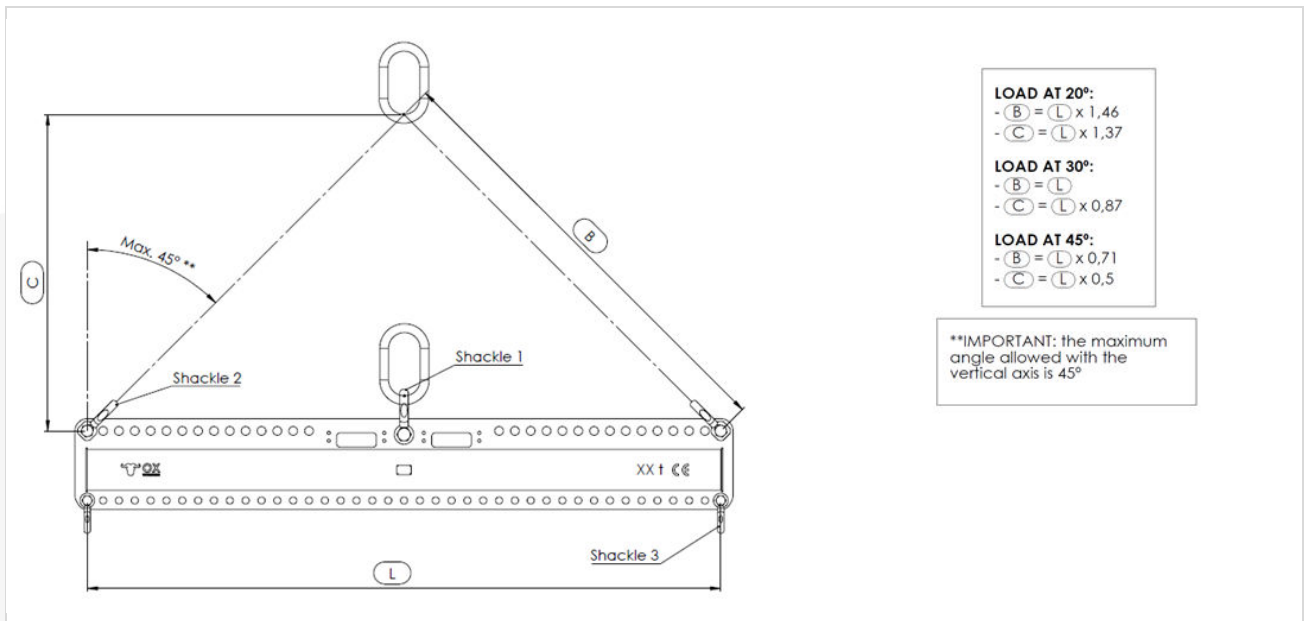
MAIN DIMENSIONS MULTI-HOLE BEAMS FOR CONTAINERS

Type of accessory configuration valid for BMC models

WLL	Code	L1	H1	H2	W1	W2	Shackle 1	Shackle 2	Shackle	Weight
		mm	mm	mm	mm	mm	ton	ton	ton	kg
15t	831BMC2015025	2590	426	435	300	390	17	12	8.5	346
24t	831BMC2024025	2610	472	481	300	410	25	17	12	462
34t	831BMC2034025	2615	546	552	300	410	35	25	17	566

OX Worldwide recommend bow shackles, head bolt with nut and pin.

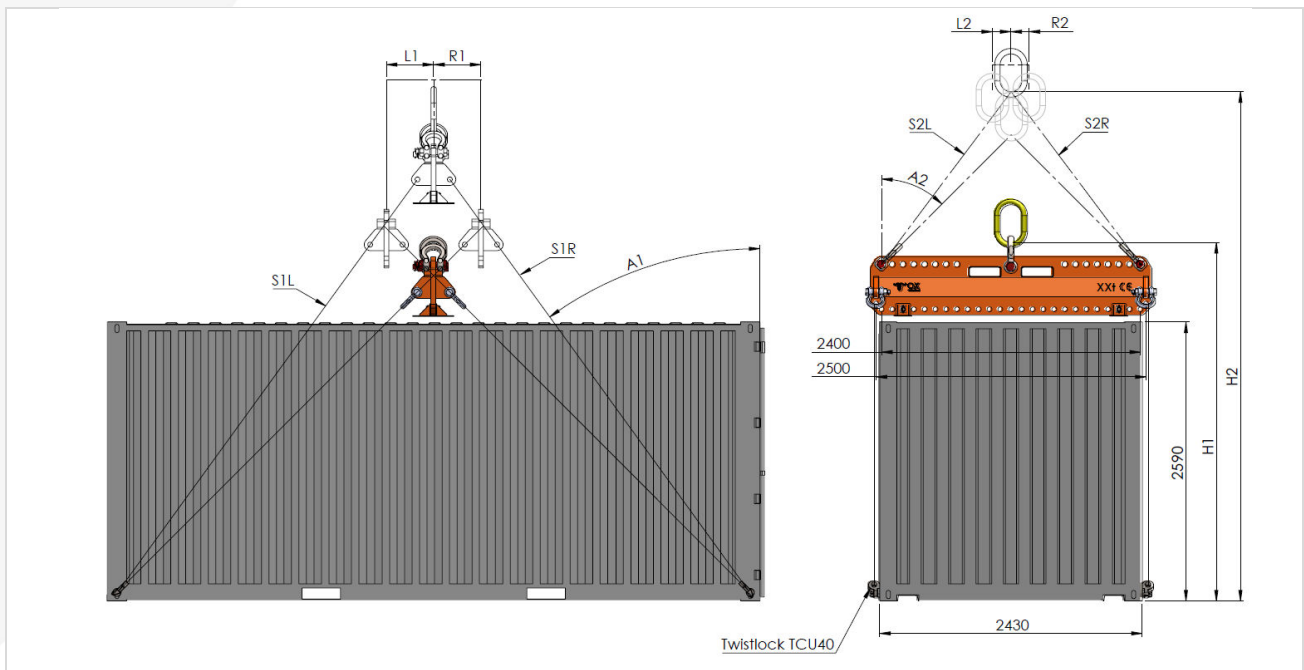
WORKING ANGLES / LOAD / LENGTHS



LOST HEIGHT AND CHAINS LENGTHS

Calculating lost height and chain lengths based on lifting configuration

ADJUSTMENT OF THE CENTER OF GRAVITY (COG)



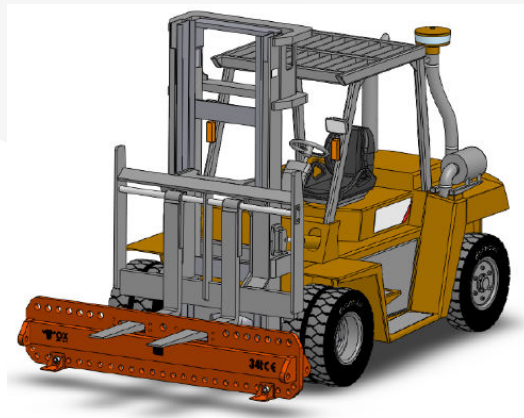
ADJUSTMENT DIMENSIONS CDG

Possible configurations for the regulation of the offsetting of the load

	A1	LI=R1	S1L=S1R	A2	L2=R2	S2L=S2R	H1	H2	Capacidad
	mm	mm	mm	mm	mm	mm	mm	mm	ton
Container 20 ft	Max. 45°	545	5.000	Max. 45°	565	2.500	3.290	5.300	15
							3.300	5.300	24
							3.320	5.300	34
Container 40 ft	Max. 45°	945	10.000	Max. 45°	565	2.500	6.360	8.375	15
							6.370	8.375	24
							6.390	8.375	34

FORKLIFT HANDLING SYSTEM


New forklift pocket system incorporated in the Multihole Lifting Beam, to use only for handling.



ACCESSORIES: SUPPORT LEGS

The new accessories allow the support of the Multihole lifting beam. They are removable elements, interchangeable in any of the lower holes and that do not interfere with the normal operation of the Multihole lifting beam.



	Code	BMC
	831BMP2015035	15t
	831BMP2024045	24t
	831BMP2034045	34t